

# ENGR 294-01

By Jose Barrios

## Electrifying a Kettle

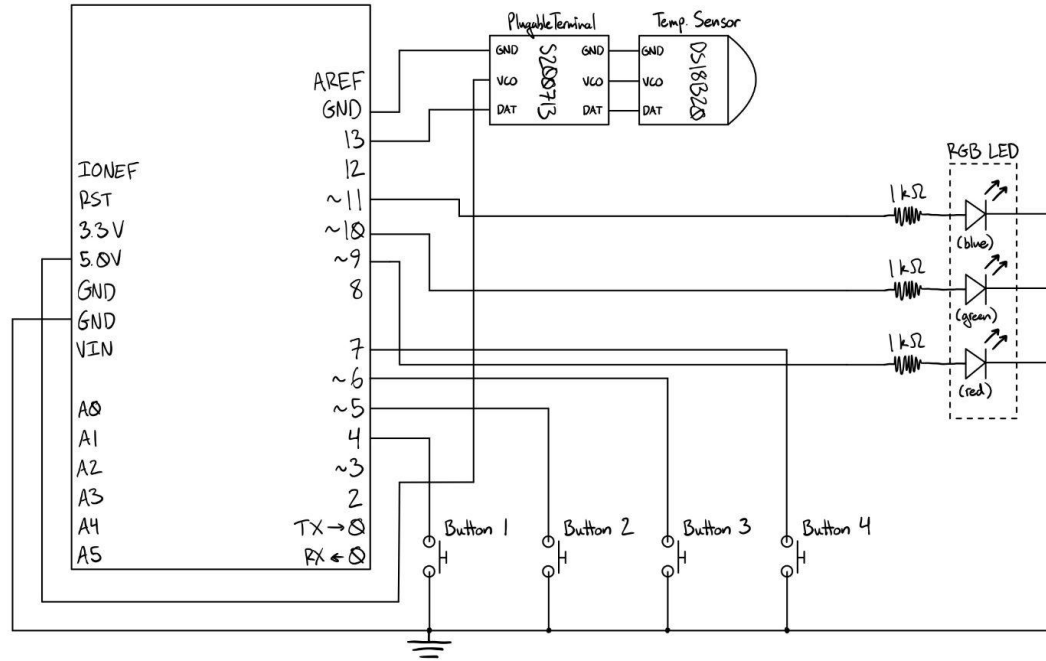


# Synopsis

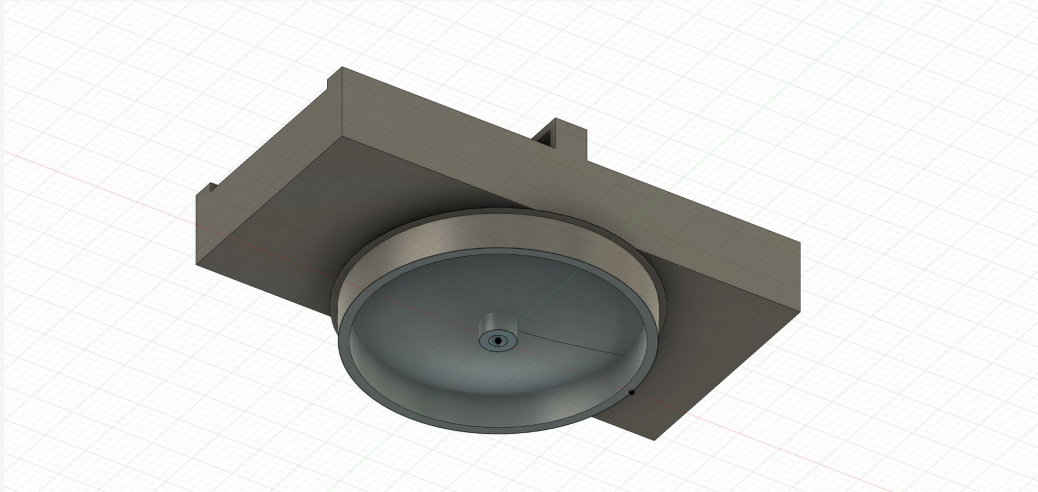
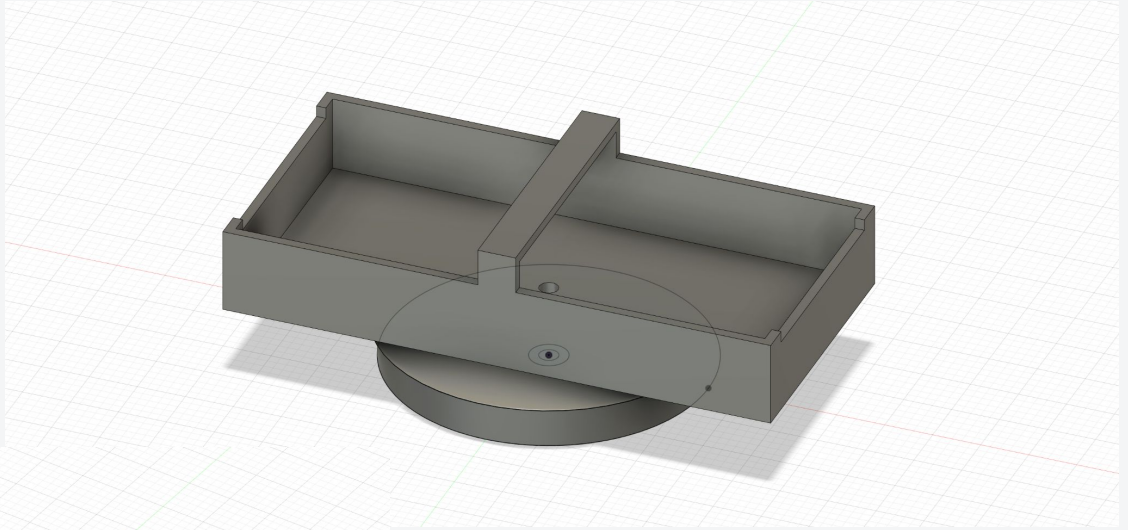
- I wanted to create something that I could use in my day-to-day
- Also wanted to use components that didn't come with my Arduino kit
- Originally wanted to make a coffee maker, but had issues with components



# Schematic



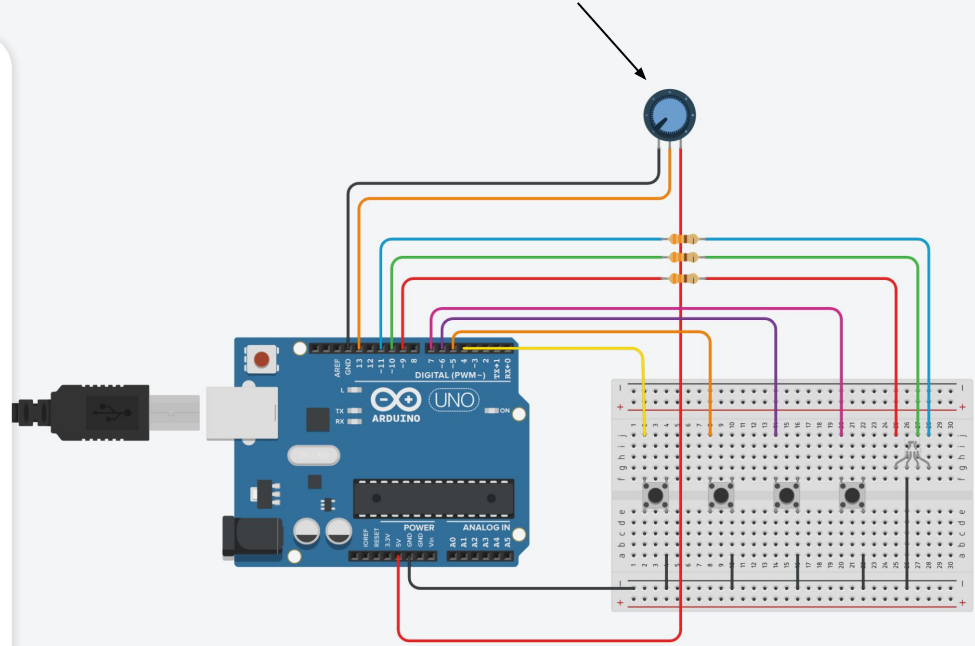
# CAD



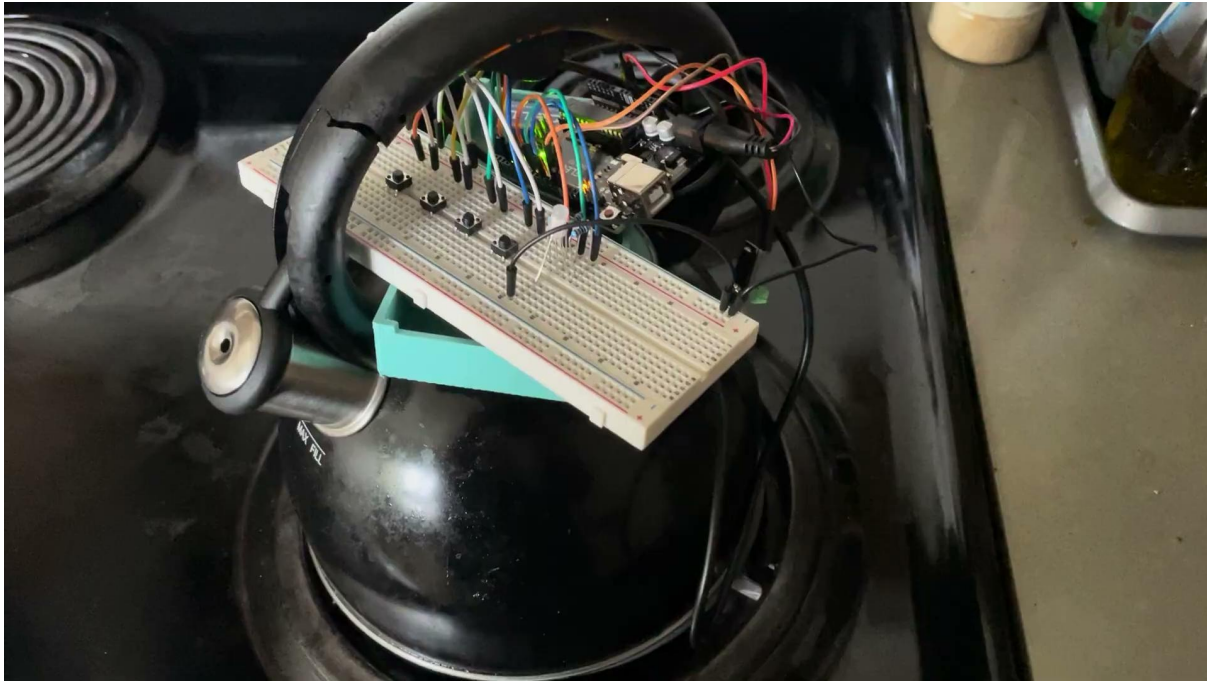
# Testing

- Used TinkerCAD to simulate system (mainly for testing code)
- Tested temperature sensor separately, since additional libraries were required for sensor to function

\* Used a potentiometer to 'simulate' the temperature probe in TinkerCAD



# Demonstration



# Questions?

(please don't ask any)

